

A CONNECTION THAT NETWORKS

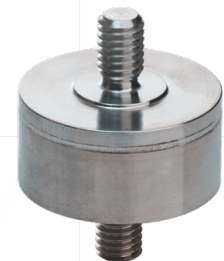
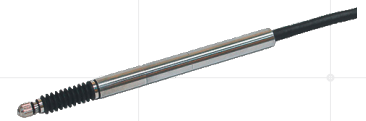
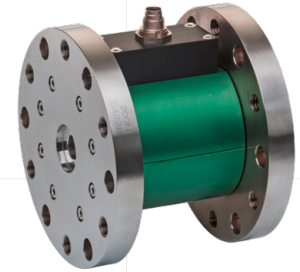
All-round talent in industrial communication

burster
TEDS



Poti

±10V



EtherNet/IP **PROFINET** EtherCAT

Instrumentation amplifier 9250

- Ultra-fast configuration and automatic sensor identification through burster TEDS
- Full-bridge strain gage, potentiometer, voltage measurement and TTL inputs
- High measurement speed
- Flexible configuration of individual modules using DigiVision PC software via USB port
- Multi-channel capability through internal bus interface

Fieldbus controller 9251

- Can be integrated into PROFINET, EtherCAT or EtherNet/IP Fieldbus systems
- Up to 8 model 9250 instrumentation amplifiers are modularly cascable
- Automatic measurement channel detection
- **NEW:** 9251 with optional measuring input: Strain gage, Potentiometer, ±10 V
- Real-time communication

Precise Economic
Scalable **User-friendly** Modular
Flexible **Bus-compatible** Inclusive
Unique **Future-proof** Time-saving
Versatile

